

Slim Compact Camera Delivers Quality Photo Performance



Silver



Black



*ISO 3200 at 3MP or lower.

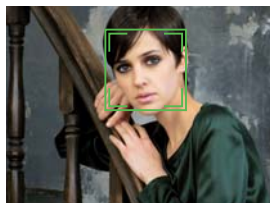


Auto Scene Recognition

In SR Auto (Auto Scene Recognition) mode, the J27 intelligently recognizes 6 different scene types and optimizes the camera settings to capture beautiful pictures automatically.



Portrait



Landscape



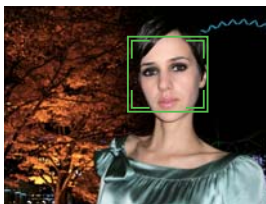
Night



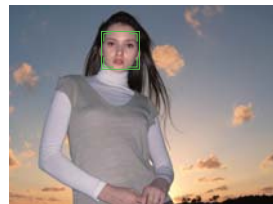
Macro



Night Portrait



Backlit Portrait





Panorama Mode

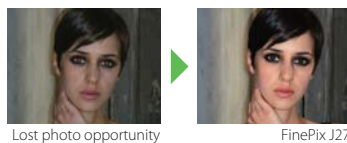
Capture panoramic photos easily.* Panorama mode lets you capture consecutive shots and automatically combines them into a beautiful panoramic image that is automatically saved.

*Use a tripod or monopod for best results. Only the panoramic picture is saved; individual photos are not. Exposure and white balance are set with the first picture and flash is suppressed. Number of recorded pixels is limited to 3 megapixels.



Face Detection with Automatic Red-eye Removal

Face Detection automatically detects faces, setting focus and exposure for clear, sharp faces with natural skin tones. And with Automatic Red-eye Removal, the J27 automatically checks for and corrects red eyes in detected faces during playback.



Picture Stabilization / Anti-blur Mode

Picture Stabilization / Anti-blur Mode automatically corrects for camera shake and subject blur, helping you to capture fleeting moments in crisp stop-action with background detail intact.



Micro Thumbnail View

Up to 100 pictures can be viewed at a time in a 10x10 array of micro thumbnails. Convenient for smooth and comfortable playback.

SPECIFICATIONS

Number of effective pixels*	10.2 million pixels
CCD sensor	1/2.3-inch CCD
Storage media	Internal memory (Approx. 10MB) / SD memory card / SDHC memory card ²⁾
File format	Still image: JPEG (Exif Ver. 2.2 ³⁾) / Movie: AVI (Motion JPEG) with sound (Design rule for Camera File system compliant / DPOF-compatible)
Number of recorded pixels	Still image: 3,664 × 2,748 (10M) / 3,664 × 2,442 (3:2 format) / 2,592 × 1,944 / 2,048 × 1,536 / 1,600 × 1,200 / 640 × 480
Lens	Fujinon 3× optical zoom lens, F2.9 (Wide) - F5.2 (Telephoto)
Lens focal length	f=5.7 - 17.1 mm, equivalent to 32 - 96 mm on a 35 mm camera
Digital zoom	Approx. 5.7×
Aperture	Wide: F2.9 - F8.8, Telephoto: F5.2 - F16
Focus distance (from lens surface)	Normal: Wide: Approx. 60 cm / 2.0 ft. to infinity, Telephoto: Approx. 60 cm / 2.0 ft. to infinity Macro: Wide: Approx. 10 cm - 70 cm / 3.9 in. - 2.3 ft., Telephoto: Approx. 35 cm - 70 cm / 1.1 ft. - 2.3 ft.
Sensitivity	Auto / Equivalent to ISO 100 / 200 / 400 / 800 / 1600 / 3200* (Standard Output Sensitivity) *Max. number of recorded pixels: 3M
Shooting modes	Portrait, Landscape, Sport, Night, Night (tripod), Fireworks, Sunset, Snow, Beach, Panorama, Party, Flower, Text, Baby, PS (Anti-blur), Natural Light, Movie
Shutter speed	(Auto mode) 1/4 sec. to 1/1400 sec. (All other modes) 8 sec. to 1/1400 sec.
LCD monitor	2.7-inch, Approx. 230,000 dots, TFT color LCD monitor, Approx. 96% coverage
Movie recording	640 × 480 pixels / 320 × 240 pixels / (30 frames/sec.) with monaural sound
Power supply	NP-45A Li-ion battery (included)
Dimensions	92.0 (W) × 55.9 (H) × 20.0 (D) mm / 3.6 (W) × 2.2 (H) × 0.8 (D) in. (excluding accessories and attachments)
Weight	Approx. 113 g / 4.0 oz. (excluding accessories, battery and memory card)

*1 : Number of effective pixels: The number of pixels on the image sensor which receive input light through the optical lens, and which are effectively reflected in the final output data of the still image.

*2 : Please see the Fujifilm website to check memory card compatibility.

*3 : Exif 2.2 is a digital camera file format that contains a variety of shooting information for optimal printing.

For more information, please visit our Website:

http://www.fujifilm.com/products/digital_cameras/index.html

Specifications are subject to change without notice.
All sample photos are simulated images.